

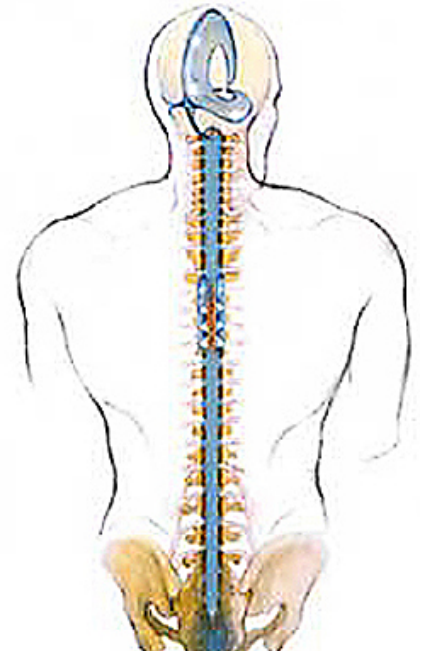
# CranioSacral Anatomy & Palpation Study Group

Sunday, August 2, 2020

Pacific Palisades, CA

9:30 a.m. - 5:30 p.m.

Presented by Karen Axelrod, MA, CST-D  
Upledger-Certified Course Instructor and Mentor



---

In this day-long study group, we will review the anatomy of the craniosacral system, including the bony container, dural meninges, ventricles, dural venous sinuses, and how all these structures move in response to the craniosacral rhythm. We will also look at the brain and spinal cord. There will be real human skull models to examine. This study group heavily emphasizes deepening skills related to palpation and therapeutic presence.

This study group includes a PowerPoint presentation, lecture, hand-outs, and hands-on practice. Participants receive 1.5 hours of Category B mentorship hours if participating in the Upledger Clinical Mentorship Program. Prerequisite: CS1.

- Check in 9 a.m.
- Morning session 9:30 a.m. - 1 p.m. *Review anatomy of the bony container, flexion/extension of the CSR, ventricles, and dural venous sinuses*
- Lunch break 1 - 2 p.m.
- Afternoon session 2 - 5:30 p.m. *Review anatomy of the brain and spinal cord*

Attendance for the whole day is \$165 per person, prepaid in advance.

(\$190 if paid on July 30 - Aug. 2, if space is available)

**Study group held at Temescal Gateway Park in Pacific Palisades, CA**

Reserve your space early: *Email me to confirm.* Then mail, Venmo, or PayPal your payment to me. Your prepayment guarantees your space. Space is limited. This study group often is waitlisted.

karen.axelrod@gmail.com - or - 310-376-0113  
www.karenaxelrod.com